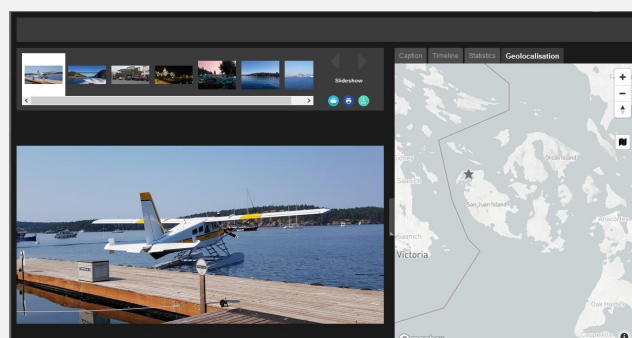
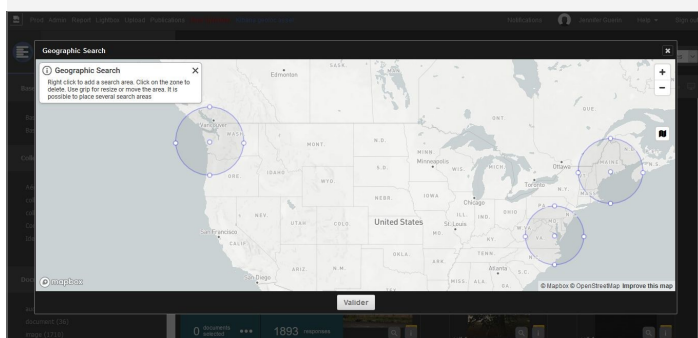


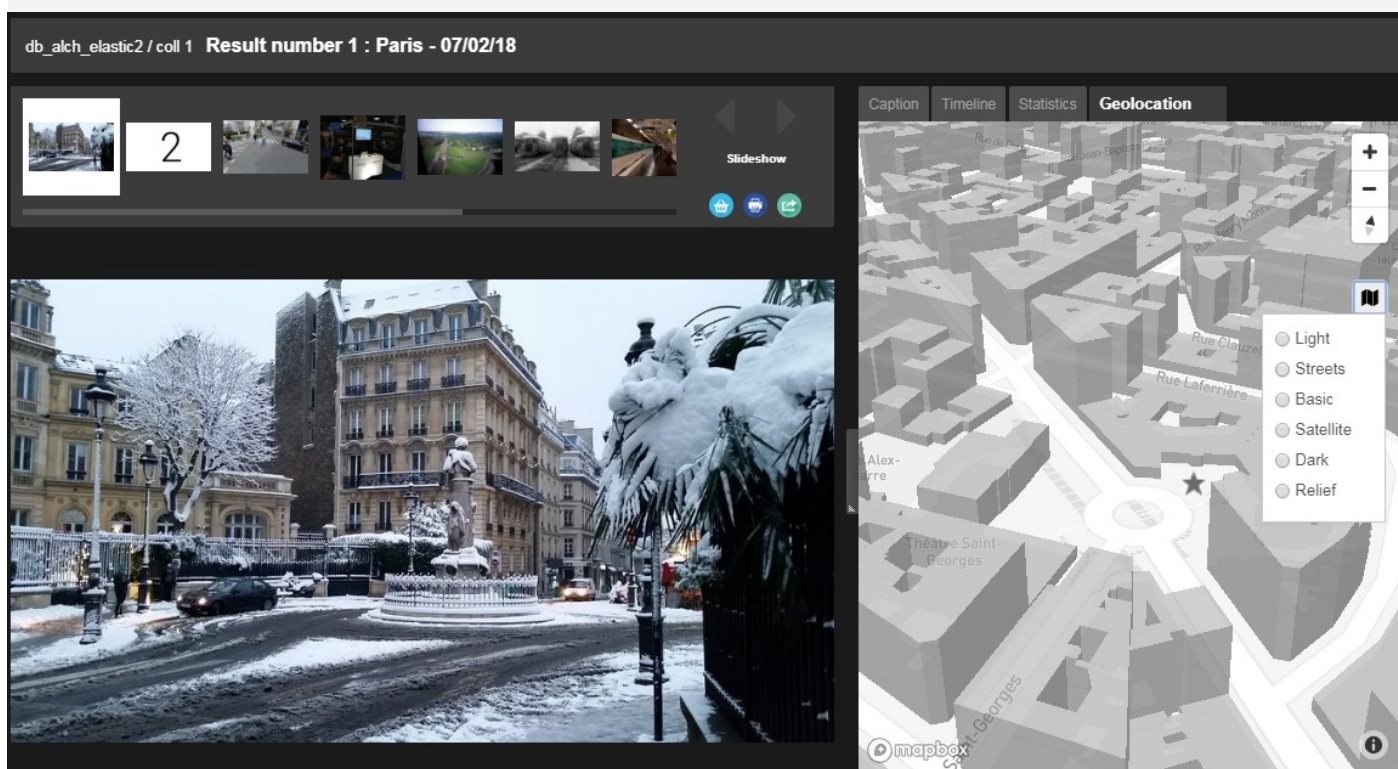
Geolocation

The feature you were all waiting for in Phraseanet is finally here, in version 4.1: **geolocation!**
Now you will be able to:

- **Search for assets by selecting specific places on a map**
 - Browse the map, select one or several geographic areas, display the results.
 - Click on the detailed view, zoom in, zoom out and view the precise location of an asset.
 - Customize the viewing mode of the map (light, street, satellite...)



- **Add a location to an asset**
 - Select a picture, click on Edit, go to the geolocation tab
 - Drag and drop to edit the precise location of the picture

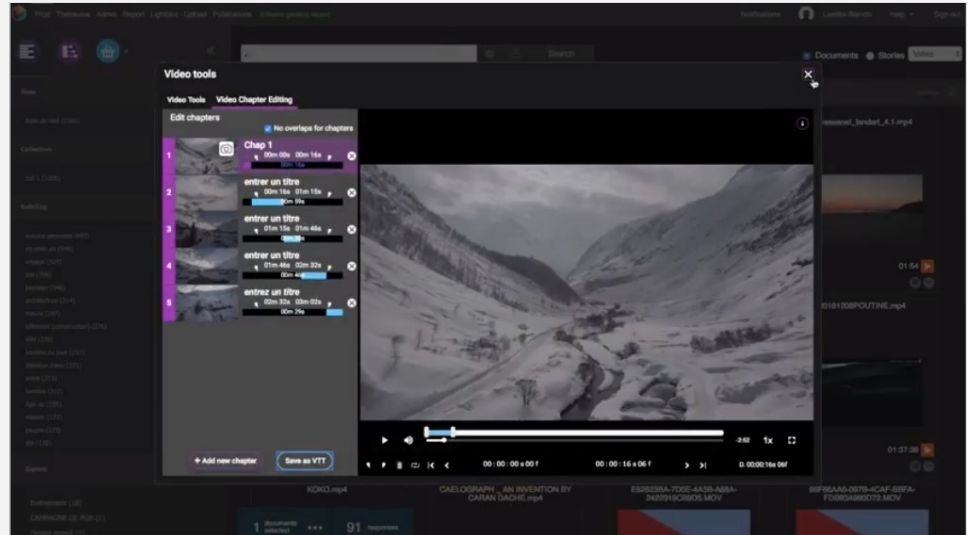


Video chaptering

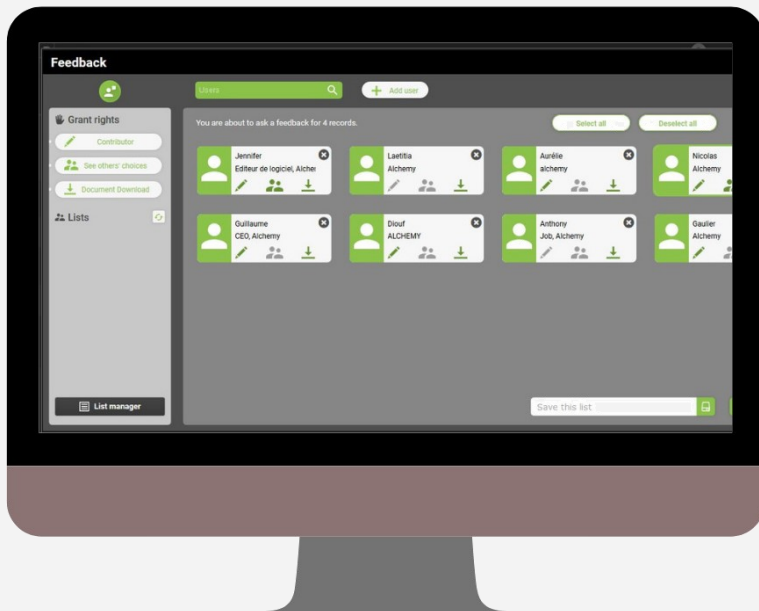
The other new major feature of this release is the **video chaptering**. With this new video tool:

- Create your chapters
- Add titles
- Illustrate each chapter with a thumbnail

Once the chaptering is done, browse all videos very quickly in Production!



Push & Feedback: Graphic redesign



For the version 4.1, **some interfaces have been redesigned.**

These graphic enhancements can be found for example on the Push and Feedback windows.

They are essential in Phraseanet since they allow users to share assets and/or receive ratings, annotations.

Some of you may also know about the list manager, used to create lists for repetitive mailings towards the same users.

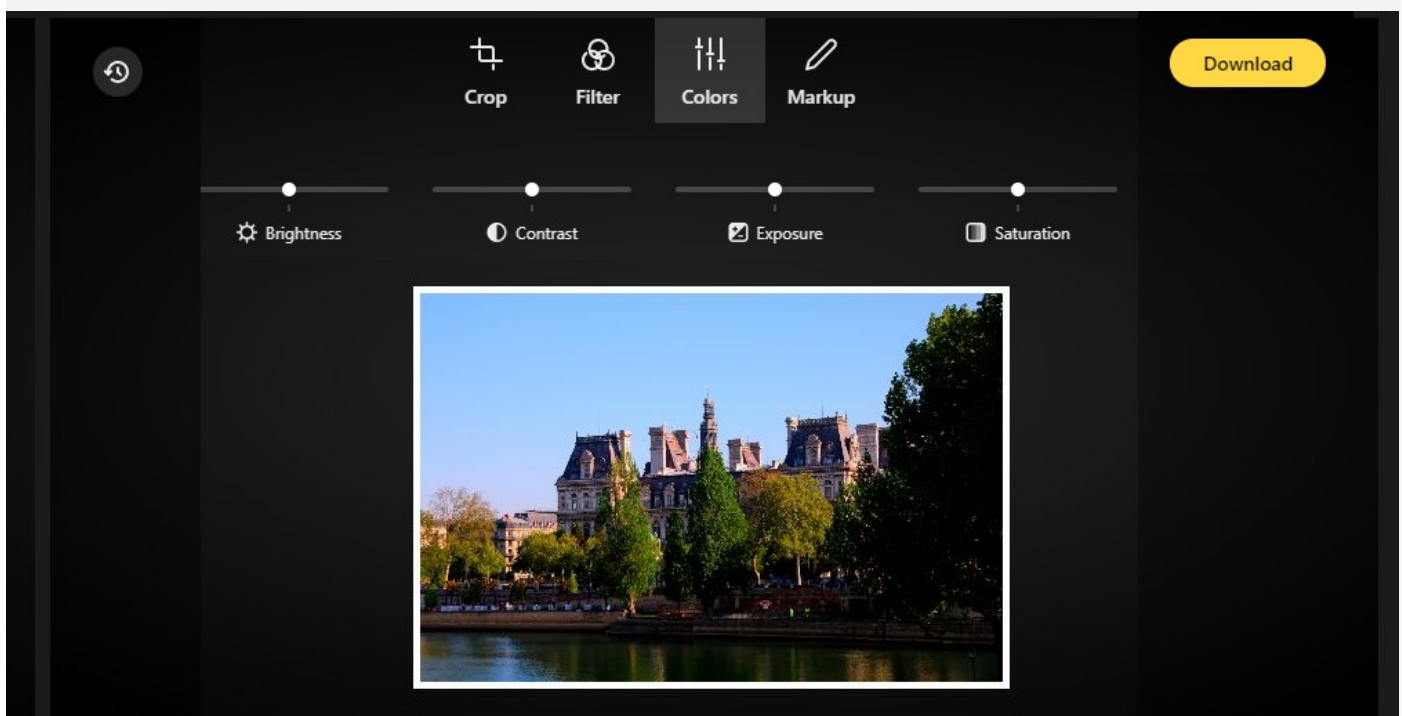
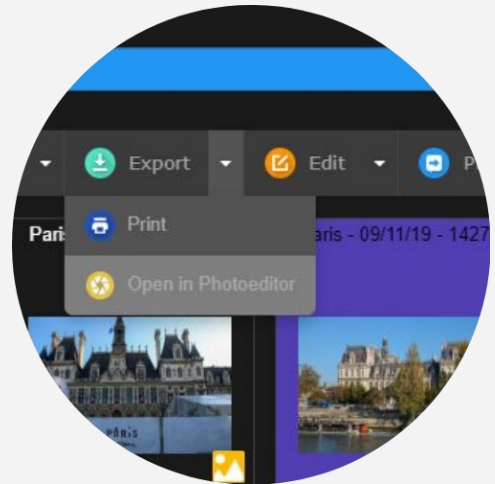
A photo editing tool inside Phraseanet!

Photo Editor is a simple retouching tool plugin*, inside Phraseanet and Parade!

This feature can be found in the Export menu in the action bar or click on the ... icon below each thumbnail.

Among the features:

- Crop (customize predefined formats)
- Filters
- Colorimetry
- Annotation



Select the original document or a resolution, then make the changes!

Once done, the picture is ready for download.

**PhotoEditor is a paid plugin, contact us to learn more!*

Phraseanet now available through Docker!

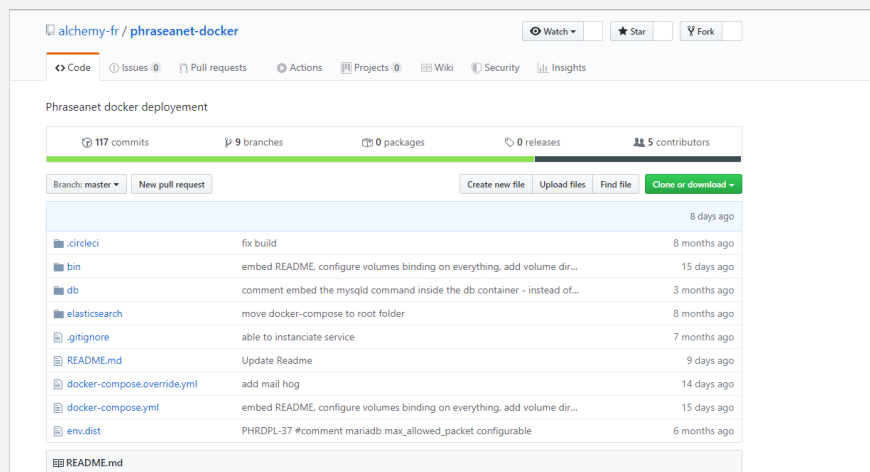
What is Docker and why deploy Phraseanet on Docker?

Docker is the most used containerization platform. It allows you to containerize all elements required for the proper functioning of the application, to test it and deploy it quickly. This solution has many advantages, such as flexibility. A container, contrary to a virtual machine, doesn't take the OS, which makes it lighter and uses less resources!

The past year, there were about 3,5 millions applications on Docker. Phraseanet is now a part of it.

The main goal is to facilitate the deployment for the users. Phraseanet is now available on Docker:

<https://github.com/alchemy-fr/phraseanet-docker>



And also...

- Possibility to exclude collections from the quarantine
- Graphic redesign of the Push and Feedback interfaces
- Enhancements of Lightbox
- Enhancements of the fields setup features (editable, visible,...)
- Basket and Stories Filters: box to check to display only some categories
- Facets: choice of the display order and possibility to hide some facets
- Print feedback reports
- A Worker to enhance the current task manager

Did you know?

Overall, there are about 600+ tickets (enhancements and bugfixes)
in this new major release!